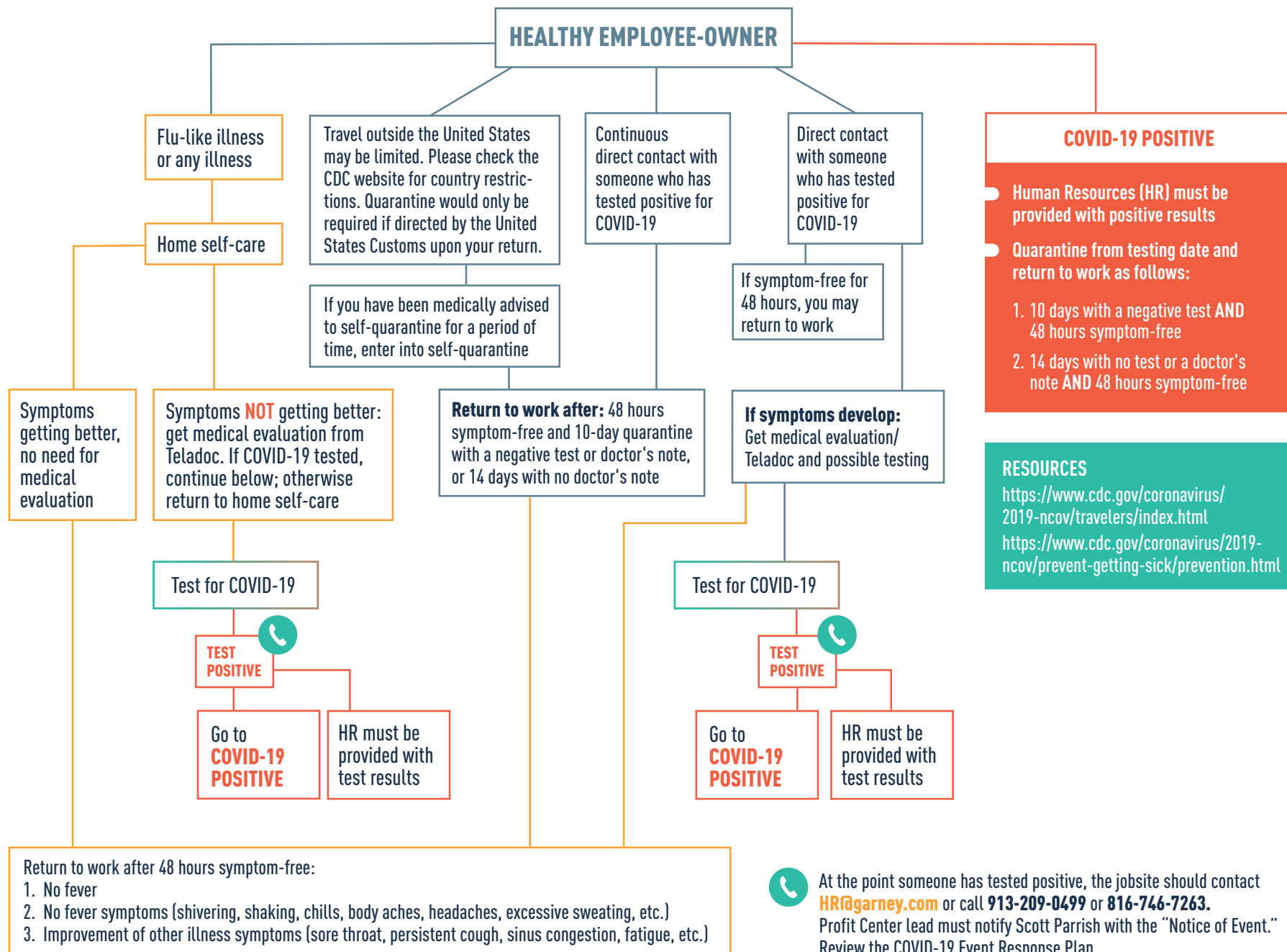


# COVID-19 SCENARIO FLOW CHART



## DEFINITIONS

**Direct Contact:** contact less than six feet, for 15 minutes or more, within the last 48 hours with a person who has tested positive for COVID-19

**Direct Continuous Contact:** living (sharing a kitchen and bathrooms) with someone who has tested positive or being tested for COVID-19