



## NOTICE OF EXEMPTION FROM TRAVEL RESTRICTIONS

March 23, 2020

To Whom It May Concern:

Garney Construction builds water and wastewater infrastructure, and these projects are deemed essential under CISA U.S. Department of Homeland Security.

The bearer of this letter is an employee of Garney Construction and is therefore exempt from any local, state and/or federal restrictions on travel or work outside the home imposed in connection with pandemic control measures.

Businesses that engage in electric power generation, water transmission and distribution are life-sustaining and essential businesses, as these businesses are necessary to provide water and electrical services to the community. In addition, the construction of these facilities are equally essential because without the continued construction of these facilities, the community may not be able to meet its electrical and water demand requirements. As further support for our position, the Department of Homeland Security guidelines, including the Memorandum on Identification of Essential Critical Infrastructure Workers During COVID-19, make clear that workers who are "working construction" in the electricity and water industry are "essential critical infrastructure workers" to "maintain, ensure, or restore the generation, transmission, and distribution of electrical power" during the COVID-19 response.

If you have questions regarding this person's exemption, please contact me at (816) 746-7250 or [mheitmann@garney.com](mailto:mheitmann@garney.com).

A handwritten signature in blue ink, appearing to read "Michael Heitmann".

**Michael Heitmann**  
CEO



TLP:WHITE

Water and Wastewater  
Infrastructure, see page 4

# GUIDANCE ON THE ESSENTIAL CRITICAL INFRASTRUCTURE WORKFORCE

March 28, 2020

Read the Guidance on the Essential Critical Infrastructure Workforce

## MEMORANDUM ON IDENTIFICATION OF ESSENTIAL CRITICAL INFRASTRUCTURE WORKERS DURING COVID-19 RESPONSE

FROM: Christopher C. Krebs  
Director  
Cybersecurity and Infrastructure Security Agency (CISA)

As the Nation comes together to slow the spread of COVID-19, on March 16th the President issued updated Coronavirus Guidance for America that highlighted the importance of the critical infrastructure workforce.

The Cybersecurity and Infrastructure Security Agency (CISA) executes the Secretary of Homeland Security's authorities to secure critical infrastructure. Consistent with these authorities, CISA has developed, in collaboration with other federal agencies, State and local governments, and the private sector, an "Essential Critical Infrastructure Workforce" advisory list. This list is intended to help State, local, tribal and territorial officials as they work to protect their communities, while ensuring continuity of functions critical to public health and safety, as well as economic and national security. Decisions informed by this list should also take into consideration additional public health considerations based on the specific COVID-19-related concerns of particular jurisdictions.

**This list is advisory in nature. It is not, nor should it be considered, a federal directive or standard. Additionally, this advisory list is not intended to be the exclusive list of critical infrastructure sectors, workers, and functions that should continue during the COVID-19 response across all jurisdictions.**

TLP:WHITE

## Individual jurisdictions should add or subtract essential workforce categories based on requirements and discretion.

TLP:WHITE

The advisory list identifies workers who conduct a range of operations and services that are typically essential to continued critical infrastructure viability, including staffing operations centers, maintaining and repairing critical infrastructure, operating call centers, working construction, and performing operational functions, among others. It also includes workers who support crucial supply chains and enable functions for critical infrastructure. The industries they support represent, but are not limited to, medical and healthcare, telecommunications, information technology systems, defense, food and agriculture, transportation and logistics, energy, water and wastewater, law enforcement, and public works.

State, local, tribal, and territorial governments are responsible for implementing and executing response activities, including decisions about access and reentry, in their communities, while the Federal Government is in a supporting role. Officials should use their own judgment in issuing implementation directives and guidance. Similarly, while adhering to relevant public health guidance, critical infrastructure owners and operators are expected to use their own judgement on issues of the prioritization of business processes and workforce allocation to best ensure continuity of the essential goods and services they support. All decisions should appropriately balance public safety, the health and safety of the workforce, and the continued delivery of essential critical infrastructure services and functions. While this advisory list is meant to help public officials and employers identify essential work functions, it allows for the reality that some workers engaged in activity determined to be essential may be unable to perform those functions because of health-related concerns.

CISA will continue to work with our partners in the critical infrastructure community to update this advisory list if necessary as the Nation's response to COVID-19 evolves.

Should you have questions about this list, please contact CISA at [CISA.CAT@cisa.dhs.gov](mailto:CISA.CAT@cisa.dhs.gov).

**Attachment:** "Guidance on the Essential Critical Infrastructure Workforce: Ensuring Community and National Resilience in COVID-19 Response Version 2.0"

[Expand All Sections](#)

## THE IMPORTANCE OF ESSENTIAL CRITICAL INFRASTRUCTURE WORKERS

### CONSIDERATIONS FOR GOVERNMENT AND BUSINESS

This list was developed in consultation with federal agency partners, industry experts, and State and local officials, and is based on several key principles:

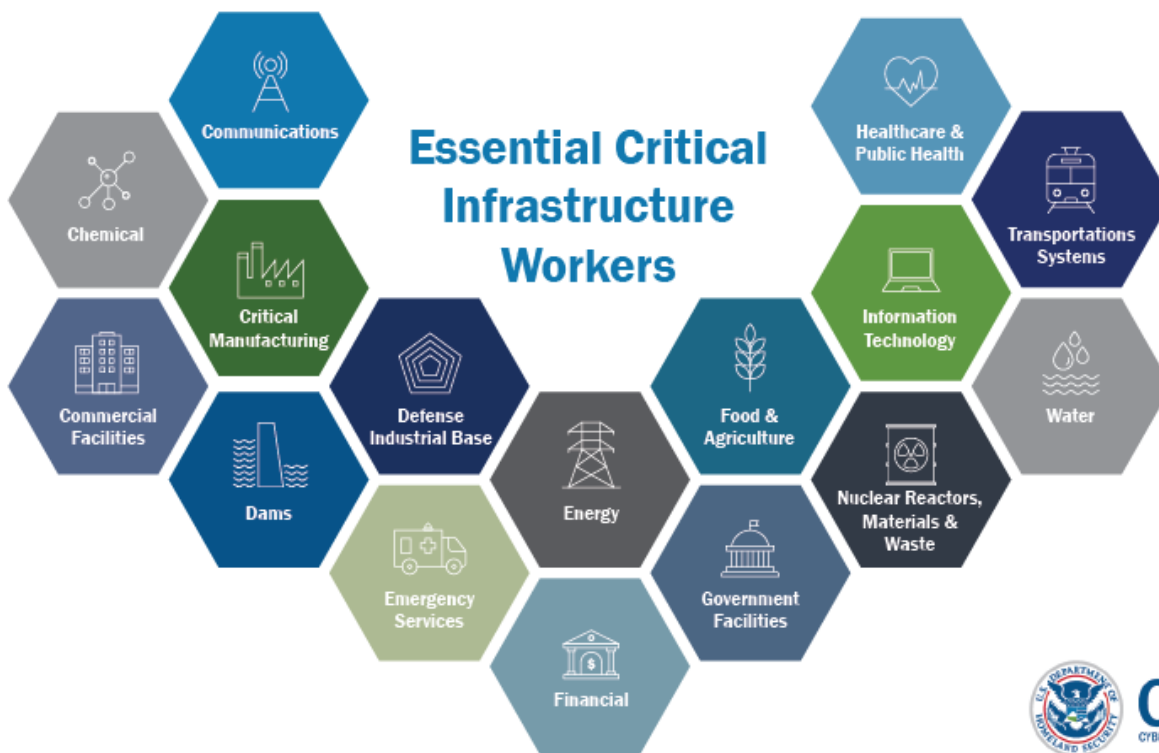
1. Response efforts to the COVID-19 pandemic are locally executed, state managed, and federally supported.

TLP:WHITE

2. Everyone should follow guidance from the CDC, as well as State and local government orders regarding strategies to limit disease spread.
3. Workers should be encouraged to work remotely when possible and focus on core business activities. In-person, non-mandatory activities should be delayed until the resumption of normal operations.
4. When continuous remote work is not possible, businesses should enlist strategies to reduce the likelihood of spreading the disease. This includes, but is not necessarily limited to, separating staff by off-setting shift hours or days and/or social distancing. These steps can preserve the workforce and allow operations to continue.
5. All organizations should implement their business continuity and pandemic plans or put plans in place if they do not exist. Delaying implementation is not advised and puts at risk the viability of the business and the health and safety of the employees.
6. Reliance on technology and just-in-time supply chains means that certain workers must be able to access certain sites, facilities, and assets to ensure continuity of functions.
7. Government employees, such as emergency managers, and the business community need to establish and maintain lines of communication.
8. When government and businesses engage in discussions about essential critical infrastructure workers, they need to consider the implications of business operations beyond the jurisdiction where the asset or facility is located. Businesses can have sizeable economic and societal impacts as well as supply chain dependencies that are geographically distributed.
9. Whenever possible, jurisdictions should align access and movement control policies related to critical infrastructure workers to lower the burden of workers crossing jurisdictional boundaries.

## IDENTIFYING ESSENTIAL CRITICAL INFRASTRUCTURE WORKERS

The following list of identified essential critical infrastructure workers is intended to be overly inclusive reflecting the diversity of industries across the United States.



## HEALTHCARE / PUBLIC HEALTH

## LAW ENFORCEMENT, PUBLIC SAFETY, AND OTHER FIRST RESPONDERS

## FOOD AND AGRICULTURE

## ENERGY

## WATER AND WASTEWATER

Employees needed to operate and maintain drinking water and wastewater/drainage infrastructure, including:

- Operational staff at water authorities.
- Operational staff at community water systems.
- Operational staff at wastewater treatment facilities.
- **Workers repairing water and wastewater conveyances** and performing required sampling or monitoring, including field staff.
- Operational staff for water distribution and testing.
- Operational staff at wastewater collection facilities.
- Operational staff and technical support for SCADA Control systems.
- Chemical and equipment suppliers to water and wastewater systems and personnel protection.
- Workers who maintain digital systems infrastructure supporting water and wastewater operations.

TLP:WHITE

## TRANSPORTATION AND LOGISTICS

## PUBLIC WORKS AND INFRASTRUCTURE SUPPORT SERVICES

## COMMUNICATIONS AND INFORMATION TECHNOLOGY

## OTHER COMMUNITY- OR GOVERNMENT-BASED OPERATIONS AND ESSENTIAL FUNCTIONS

- Workers to ensure continuity of building functions, including but not limited to security and environmental controls (e.g., HVAC), the manufacturing and distribution of the products required for these functions, and the permits and inspections for construction supporting essential infrastructure.
- Elections personnel to include both public and private sector elections support.
- Workers supporting the operations of the judicial system.
- Federal, State, and Local, Tribal, and Territorial employees who support Mission Essential Functions and communications networks.
- Trade Officials (FTA negotiators; international data flow administrators).
- Employees necessary to maintain news and media operations across various media.
- Employees supporting Census 2020.
- Weather forecasters.
- Clergy for essential support.
- Workers who maintain digital systems infrastructure supporting other critical government operations.
- Workers who support necessary credentialing, vetting and licensing operations for critical infrastructure workers.
- Customs and immigration workers who are critical to facilitating trade in support of the national emergency response supply chain.
- Educators supporting public and private K-12 schools, colleges, and universities for purposes of facilitating distance learning or performing other essential functions.
- Staff at government offices who perform title search, notary, and recording services in support of mortgage and real estate services and transactions.
- Residential and commercial real estate services, including settlement services.
- Workers supporting essential maintenance, manufacturing, design, operation, inspection, security, and construction for essential products, services, and supply chain and COVID 19 relief efforts.

## CRITICAL MANUFACTURING

## HAZARDOUS MATERIALS

## FINANCIAL SERVICES

## CHEMICAL

## DEFENSE INDUSTRIAL BASE

TLP:WHITE

# COMMERCIAL FACILITIES

# RESIDENTIAL/SHELTER FACILITIES AND SERVICES

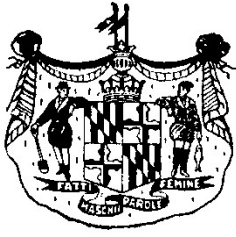
# HYGIENE PRODUCTS AND SERVICES

Taxonomy Topics: Infrastructure Security

Attachment

 <b>Guidance on the Essential Critical Infrastructure Workforce: Ensuring Community and National Resilience in COVID-19 Response</b>	<b>384.66 KB</b>
---	------------------

TLP:WHITE



**The State of Maryland**  
**Executive Department**

ORDER  
OF THE  
GOVERNOR OF THE STATE OF MARYLAND  
NUMBER 20-03-30-01

AMENDING AND RESTATING THE ORDER OF MARCH 23, 2020, PROHIBITING  
LARGE GATHERINGS AND EVENTS AND CLOSING SENIOR CENTERS, AND  
ALL NON-ESSENTIAL BUSINESSES AND OTHER ESTABLISHMENTS, AND  
ADDITIONALLY REQUIRING ALL PERSONS TO STAY AT HOME

- WHEREAS, A state of emergency and catastrophic health emergency was proclaimed on March 5, 2020, and renewed on March 17, 2020, to control and prevent the spread of COVID-19 within the state, and the state of emergency and catastrophic health emergency still exists;
- WHEREAS, COVID-19, a respiratory disease that spreads easily from person to person and may result in serious illness or death, is a public health catastrophe and has been confirmed throughout Maryland;
- WHEREAS, To reduce the spread of COVID-19, the U.S. Centers for Disease Control and Prevention and the Maryland Department of Health recommend canceling large gatherings and social distancing in smaller gatherings;
- WHEREAS, The currently known and available scientific evidence and best practices support limitations on large gatherings and social distancing to prevent exposures and transmissions, and reduce the threat to especially vulnerable populations, including older individuals and those with chronic health conditions;
- WHEREAS, To reduce the threat to human health caused by transmission of the novel coronavirus in Maryland, and to protect and save lives, it is necessary and reasonable that individuals in the state refrain from congregating;
- WHEREAS, To protect the public health, welfare, and safety, prevent the transmission of the novel coronavirus, control the spread of COVID-19,



and save lives, it is necessary to control and direct the movement of individuals in Maryland, including those on the public streets;

WHEREAS, It is further necessary to control and direct in Maryland the occupancy and use of buildings and premises, as well as places of amusement and assembly; and

WHEREAS, the Coronavirus Response Team will continue to advise on related public health and emergency management decisions;

NOW, THEREFORE, I, LAWRENCE J. HOGAN, JR., GOVERNOR OF THE STATE OF MARYLAND, BY VIRTUE OF THE AUTHORITY VESTED IN ME BY THE CONSTITUTION AND LAWS OF MARYLAND, INCLUDING BUT NOT LIMITED TO TITLE 14 OF THE PUBLIC SAFETY ARTICLE, AND IN AN EFFORT TO CONTROL AND PREVENT THE SPREAD OF COVID-19 WITHIN THE STATE, DO HEREBY ORDER:

I. The Order of the Governor of the State of Maryland, dated March 12, 2020, entitled “Prohibiting Large Gatherings and Events and Closing Senior Centers,” as amended and restated on March 16, 2020, and further amended and restated on March 19, 2020 by Order Number 20-03-19-01, and further amended and restated on March 23, 2020 by Order Number 20-03-29-01, is further amended and restated in its entirety as set forth herein.

II. Stay-at-Home Order.

a. All persons living in the State of Maryland are hereby ordered, effective as of 8:00 p.m. on March 30, 2020, to stay in their homes or places of residences (“Homes”) except:

- i. to conduct or participate in Essential Activities (defined below);
- ii. staff and owners of businesses and organizations that are not required to close pursuant to paragraph IV or paragraph V below may travel:

1. between their Homes and those businesses and organizations; and
2. to and from customers for the purpose of delivering goods or performing services; and

iii. staff and owners of Non-Essential Businesses (defined below) may travel:

1. between their Homes and those Non-Essential Businesses for the purpose of engaging in Minimal Operations; and
2. to and from customers for the purpose of delivering goods.

b. As used herein, “Essential Activities” means:

- i. Obtaining necessary supplies or services for one’s self, family, household members, pets, or livestock, including, without limitation: groceries, supplies for household consumption or use, supplies and equipment needed to work from home, laundry, and products needed to maintain safety, sanitation, and essential maintenance of the home or residence;
- ii. Engaging in activities essential for the health and safety of one’s self, family, household members, pets, or livestock, including such things as seeking medical or behavior health or emergency services, and obtaining medication or medical supplies;
- iii. Caring for a family member, friend, pet, or livestock in another household or location, including, without limitation, transporting a family member, friend, pet, or livestock animal for essential health and safety activities, and to obtain necessary supplies and services;
- iv. Traveling to and from an educational institution for purposes of receiving meals or instructional materials for distance learning;
- v. Engaging in outdoor exercise activities, such as walking, hiking, running, or biking, but only in compliance with paragraph III below and applicable social distancing guidance published by the U.S. Centers for Disease Control and Prevention (“CDC”) and the Maryland Department of Health (“MDH”);
- vi. Travel required by a law enforcement officer or court order; or
- vii. Traveling to and from a federal, State, or local government building for a necessary purpose.

III. Gatherings Large Than 10 Persons Prohibited.

- a. Social, community, spiritual, religious, recreational, leisure, and sporting gatherings and events (“large gatherings and events”) of more than 10 people are hereby prohibited at all locations and venues, including but not limited to parades, festivals, conventions, and fundraisers.
- b. Planned large gatherings and events must be canceled or postponed until after termination of the state of emergency and the proclamation of the catastrophic health emergency has been rescinded.

IV. Closure of Non-Essential Businesses, Generally.

- a. This Order controls the occupancy and use of all businesses, organizations, establishments, and facilities that are not part of the critical infrastructure sectors identified by the U.S. Department of Homeland Security’s Cybersecurity and Infrastructure Security Agency (currently described at

<https://www.cisa.gov/identifying-critical-infrastructure-during-covid-19>)  
(collectively, “Non-Essential Businesses”).

- b. Subject to paragraph IV.c, all Non-Essential Businesses shall remain closed to the general public.
- c. Staff and owners may continue to be on-site at Non-Essential Businesses for only the following purposes (“Minimal Operations”):
  - i. Facilitating remote working (a/k/a/ telework) by other staff;
  - ii. Maintaining essential property;
  - iii. Preventing loss of, or damage to property, including without limitation, preventing spoilage of perishable inventory;
  - iv. Performing essential administrative functions, including without limitation, picking up mail and processing payroll;
  - v. Caring for live animals; and
  - vi. In the case of Non-Essential Businesses that are retail establishments, continuing to sell retail products on a delivery basis.
- d. All businesses, organizations, establishments, and facilities that are required to close pursuant to paragraph V, pursuant to any other Order of the Governor of the State of Maryland or any other Order of a political subdivision, shall be and remain closed in accordance with paragraph V or such other Order, as the case may be.

V. Closure of Certain Specific Businesses, Organizations, and Facilities.

- a. Senior Centers. All senior citizen activities centers (as defined in Section 10-501(i) of the Human Services Article of the Maryland Code) shall remain closed until after termination of the state of emergency and the proclamation of the catastrophic health emergency has been rescinded.
- b. Restaurants and Bars.
  - i. This Order controls the occupancy and use of restaurants, bars, and other similar establishments that sell food or beverages for consumption on-premises in Maryland (“Restaurants and Bars”). This Order does not apply to food or beverage services in health care facilities, which are expressly excluded from the definition of “Restaurants and Bars.”
  - ii. All Restaurants and Bars shall remain closed to the general public, except that, to the extent permitted by applicable law, and in accordance with any social-distancing recommendations of MDH, food and beverages may be:

1. sold if such food or beverages are promptly taken from the premises, i.e., on a carry-out or drive-through basis; or
2. delivered to customers off the premises.

c. *Fitness Centers.*

- i. This Order controls the occupancy and use of fitness centers, health clubs, health spas, gyms, aquatic centers, and self-defense schools in Maryland (“Fitness Centers”).
- ii. All Fitness Centers shall remain closed to the general public, except that the portion of any Fitness Center that is licensed or otherwise permitted by applicable law, regulation, or order to provide child care services may remain open to the general public for the purpose of continuing to provide such child care services.

d. *Theaters.*

- i. This Order controls the occupancy and use of theatres in Maryland at which live performances occur or motion pictures are shown (“Theaters”).
- ii. All Theaters shall remain closed to the general public.

e. *Malls.*

- i. This Order controls the occupancy and use of shopping centers in Maryland that have one or more enclosed pedestrian concourses (“Enclosed Malls”).
- ii. The following portions of Enclosed Malls shall remain closed to the general public:
  1. pedestrian concourses and other interior common areas open to the general public, including without limitation, food courts; and
  2. retail establishments only accessible to the general public from enclosed pedestrian concourses or other interior areas.
- iii. This paragraph V.e does not require closure of retail establishments attached to Enclosed Malls that are directly accessible from the outside.
- iv. Notwithstanding paragraph V.e.ii, local governments may approve access by the general public to the following parts of Enclosed Malls:
  1. retail establishments (a) that primarily sell groceries or pharmacy products, or (b) at which licensed professionals provide health care services; and

2. pedestrian concourses and other interior common areas, but solely to the extent necessary for the general public to access the retail establishments described in paragraph V.e.iv.1.

f. Other Recreational Establishments.

- i. This Order controls the occupancy and use of the following establishments in Maryland (“Recreational Establishments”):
  1. bingo halls;
  2. bowling alleys;
  3. pool halls;
  4. amusement parks;
  5. roller and ice skating rinks;
  6. all golf courses (public and private), miniature golf establishments, and driving ranges;
  7. social and fraternal clubs, including without limitation, American Legion posts, VFW posts, and Elks Clubs;
  8. campgrounds; and
  9. any other establishment not listed above that is subject to the admission and amusement tax under Title 4 of the Tax-General Article of the Maryland Code.
- ii. All Recreational Establishments are hereby closed to the general public (including members, in the case of private clubs), effective as of 5:00 p.m. on March 30, 2020 (or shall remain closed, if closed by a prior Order).

g. Other Miscellaneous Establishments.

- i. This Order controls the occupancy and use of the following establishments in Maryland:
  1. tattoo parlors;
  2. tanning salons;
  3. barber shops; and
  4. beauty salons and all other establishments that provide esthetic services, provide hair services, or provide nail services (as described in Title 5, Subtitle 2 of the Business Occupations Article of the Maryland Code).
- ii. The establishments listed in paragraph V.g.i above shall remain closed to the general public.

VI. Specific Exclusions. For avoidance of doubt:

- a. This Order does not require the closure of, or prohibit the movement of any staff or volunteer traveling to, from, or in connection with their duties at any:

- i. Any federal, State, or local government unit, building, or facility;
- ii. Any newspaper, television, radio, or other media service; or
- iii. Any non-profit organization or facility providing essential services to low-income persons, including, without limitation, homeless shelters, food banks, and soup kitchens.

b. Paragraph II of this Order does not apply to:

- i. Persons whose homes or residences have become unsafe, such as victims of domestic violence; and
- ii. Persons who are experiencing homelessness, but governmental and other entities are strongly encouraged to make shelter available for such persons to the maximum extent practicable, in a manner consistent with the social distancing guidelines of the CDC and MDH.

VII. Government Buildings and Facilities with Large Occupancy or Attendance.

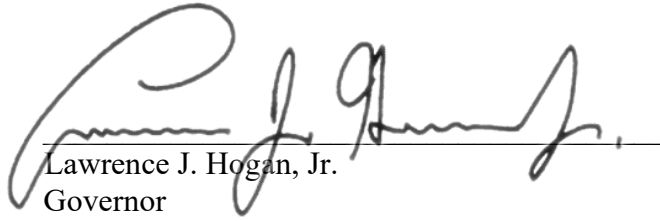
- a. State and local government buildings and facilities with an expected occupancy or attendance of more than 10 people shall:
  - i. Promptly and conspicuously post in the building or facility a copy of the MDH recommendations for social distancing; and
  - ii. Provide all occupants and attendees with the capability to wash their hands.
- b. A copy of this Order shall be made available to all occupants or attendees at any State or local government building and facility with an expected occupancy or attendance of more than 10 people.

VIII. General Provisions.

- a. Each law enforcement officer of the State or a political subdivision shall execute and enforce this Order.
- b. A person who knowingly and willfully violates this Order is guilty of a misdemeanor and on conviction is subject to imprisonment not exceeding one year or a fine not exceeding \$5,000 or both.
- c. This Order remains effective until after termination of the state of emergency and the proclamation of the catastrophic health emergency has been rescinded, or until rescinded, superseded, amended, or revised by additional orders.
- d. The effect of any statute, rule, or regulation of an agency of the State or a political subdivision inconsistent with this order is hereby suspended.
- e. The underlined paragraph headings in this Order are for convenience of reference

only and shall not affect the interpretation of this Order.

ISSUED UNDER MY HAND THIS 30TH DAY OF MARCH, 2020, AND  
EFFECTIVE IMMEDIATELY.



Lawrence J. Hogan, Jr.  
Governor



OFFICE OF LEGAL COUNSEL  
**INTERPRETIVE GUIDANCE**

Water and Wastewater  
Infrastructure construction,  
see page 1

**Number:** COVID19-04  
**Date:** March 23, 2020  
**Re:** Order of the Governor of the State of Maryland, Number 20-03-23-01, dated March 23, 2020, Amending and Restating the Order of March 19, 2020, Prohibiting Large Gatherings and Events and Closing Senior Centers, and Additionally Closing All Non-Essential Businesses and Other Establishments

---

At this time, the Office of Legal Counsel recommends that the Administration interpret the above-referenced Order as follows:

1. **Not a Shelter-in-Place Order.** The Order is not a shelter-in-place order. However, all Marylanders are urged to remain home, and employers are urged to promote work-from-home arrangements to the greatest extent possible.
2. **Businesses, Organizations, and Facilities That May Remain Open.** The following is a non-exhaustive list of businesses, organizations, and facilities that are included in the federal critical infrastructure sectors. The Order does not require these businesses, organizations, and facilities to close.
  - a. **The Chemical Sector** includes, but is not limited to:
    - i. Pharmaceutical manufacturers.
    - ii. Chemical manufacturers.
    - iii. Distributors of chemicals and pharmaceuticals.
  - b. **The Commercial Facilities Sector** includes, but is not limited to:
    - i. Lodging.
    - ii. Building and property maintenance companies, including without limitation plumbers, electricians, HVAC service companies, roofers, environmental services companies, exterminators, arborists, and landscapers.
    - iii. Janitorial firms.
    - iv. Companies that sell supplies and materials for maintenance of commercial and residential buildings, including “big box” home improvement supply stores, plumbing distributors, electrical distributors, and HVAC distributors.
    - v. Laundromats, dry cleaners, and laundry services.
    - vi. **Commercial and residential construction companies.**
    - vii. Self-storage facilities.

**Please note:** Casinos, racetracks, simulcast betting facilities, enclosed malls, certain recreational establishments, and certain retail businesses are subject to specific provisions of this and other Orders, and are required to close. Please read the Order carefully.
  - c. **The Communications Sector** includes, but is not limited to:
    - i. Broadcasting companies and stations.
    - ii. Cable TV companies.

*This Interpretive Guidance maybe revised or rescinded at any time. Citizens are urged to consult with their own legal counsel for advice about the application of the Order and this Interpretive Guidance to their particular facts and circumstances.*



- iii. Telephone (cellular and landline) companies.
  - iv. Internet service providers.
- d. **The Critical Manufacturing Sector** includes, but is not limited to, manufacturing of:
- i. Steel, iron, and aluminum products.
  - ii. Engines, motors, turbines, generators, and power transmission equipment.
  - iii. Earth-moving, mining, agricultural, and construction equipment.
  - iv. Parts for water, electric, and telecommunications utility infrastructure.
  - v. Land, air, and water vehicles, and related parts.
  - vi. Medical equipment.
  - vii. Personal protective equipment.
  - viii. Cleaning and sanitation equipment and supplies.
- e. **The Defense Industrial Base Sector** includes, but is not limited to:
- i. Companies that research, develop, manufacture, or integrate weapons, defense, or intelligence systems or assets.
  - ii. Private contractors that support defense and intelligence agencies.
- f. **The Emergency Services Sector** includes, but is not limited to:
- i. Law enforcement.
  - ii. Emergency medical services.
  - iii. Emergency management.
  - iv. Fire and rescue services.
  - v. Private ambulance companies.
- g. **The Energy Sector** includes, but is not limited to:
- i. Companies engaged in electricity production (excluding hydroelectric and nuclear, which are included in other sectors).
  - ii. Companies engaged in the production, refining, storage, transportation, distribution, and sale of oil, gas, and propane products, including gas stations and truck stops.
  - iii. Companies that provide utility maintenance services.
- h. **The Financial Services Sector** includes, but is not limited to:
- i. Banks and credit unions.
  - ii. Non-bank lenders.
  - iii. Payroll processing companies.
  - iv. Payment processing companies.
  - v. Armored car companies.
  - vi. Insurance companies.
  - vii. Securities and investment companies.
  - viii. Accounting and bookkeeping firms.
- i. **The Food and Agriculture Sector** includes, but is not limited to:
- i. Grocery stores.
  - ii. Farmer's markets.
  - iii. Convenience stores.

- iv. Alcoholic beverage stores and distributors, distilleries, and wineries.
- v. Institutional food service and supply companies.
- vi. Farms.
- vii. Food manufacturing and processing.
- viii. Pet supply stores.
- ix. Veterinary hospitals, clinics, and kennels.
- x. Companies that manufacture, maintain, and sell agricultural equipment.
- xi. Companies that manufacture, or support the manufacturing of paper products.

**Please note:** Restaurants and bars are subject to specific provisions of the Order, and are required to close (except for carry-out, delivery, and drive-through sales). Please read the Order carefully.

- j. **The Government Facilities Sector** also encompasses private persons and entities that support the judicial system including, but not limited to:

- i. Lawyers and law firms.
- ii. Court reporters.
- iii. Bail bondsmen.

- k. **The Healthcare and Public Health Sector** includes, but is not limited to:

- i. Hospitals.
- ii. Healthcare systems and clinics.
- iii. Offices of health care providers, including physicians, dentists, and pharmacists.
- iv. Physical, occupation, and speech therapists.
- v. Behavioral health facilities and professionals, including psychologists, mental health counselors, and substance abuse counselors
- vi. Rehabilitation facilities.
- vii. Diagnostic facilities, including radiology, imaging, and laboratory facilities.
- viii. Health plans, payors, and billing companies.
- ix. Funeral homes and crematoriums.
- x. Senior living facilities, including independent living, assisted living, and skilled nursing.
- xi. Manufacturers and distributors of medical equipment and supplies.
- xii. Medical cannabis growers, processors, and dispensaries.
- xiii. Home health care companies.
- xiv. Pharmacies.

- l. **The Information Technology Sector** includes, but is not limited to:

- i. Companies that design, develop, distribute, host, sell, and support information technology software and hardware.
- ii. Companies that provide network routing, access, and configuration services.

- m. **The Transportation Systems Sector** includes, but is not limited to:

- i. Airlines and operators of commercial aircraft (manned and unmanned).
- ii. Airports, air strips, heliports, and seaplane bases.
- iii. Railroads.
- iv. Motor carriers.
- v. Carriers of marine freight, including ocean carriers and inland carriers.

- vi. Marine, rail, truck, and intermodal terminals, and operators thereof.
  - vii. Stevedores, longshoremen, baggage handlers, and others who handle cargo at transportation hubs.
  - viii. Courier, package delivery, mail service, and mail management companies.
  - ix. Warehousing and distribution companies.
  - x. Pipeline owners, operators and maintenance companies.
  - xi. Lessors of transportation assets, including railcars and truck trailers.
  - xii. Companies that supply parts, or provide maintenance and repair services for transportation assets and infrastructure, including aircraft, marine vessels, locomotives, rail cars, trucks, buses, cars, heavy equipment, roads, bridges, tunnels, airports, air strips, marine terminals, railroads.
  - xiii. Automotive supply stores and repair shops.
- n. **The Water and Wastewater Systems Sector** includes, but is not limited to:
- i. Municipal, community, and other drinking water and wastewater systems and facilities.
  - ii. Well drillers.
  - iii. Companies that provide maintenance and inspection services for water and wastewater assets, including treatment works, residential water treatment systems, piping, pumps, tanks, drains, conveyances, and monitoring systems.
  - iv. Water testing companies.
- o. **Supporting Firms.** The federal critical infrastructure sectors include firms providing the following to any other business, organization, or facility included in the federal critical infrastructure sectors:
- i. Staffing and/or payroll services.
  - ii. Essential raw materials, products, or services.
3. **Door-to-Door Solicitation.** Door-to-door solicitation (even by businesses that are permitted to remain open) is likely to violate social-distancing guidelines and should be discontinued.

**PLEASE NOTE:**

**The list in #2 above is non-exhaustive. The fact that a particular business, organization, or facility is not included in the list does not mean it is excluded from the federal critical infrastructure sectors. Please consult <https://www.cisa.gov/identifying-critical-infrastructure-during-covid-19> for additional guidance about what is and is not included in the federal critical infrastructure sectors.**